

An aerial photograph of a large, winding lake surrounded by a dense forest. The trees are in various stages of autumn, showing shades of green, yellow, orange, and red. The sky is clear and blue. The text is overlaid on the image in a bold, dark blue font.

Welcome
2015 Annual Communications Meeting
Member Representatives
Coalition for Equitable Water Flow

9:00 a.m. Registration
9:30 a.m. Meeting

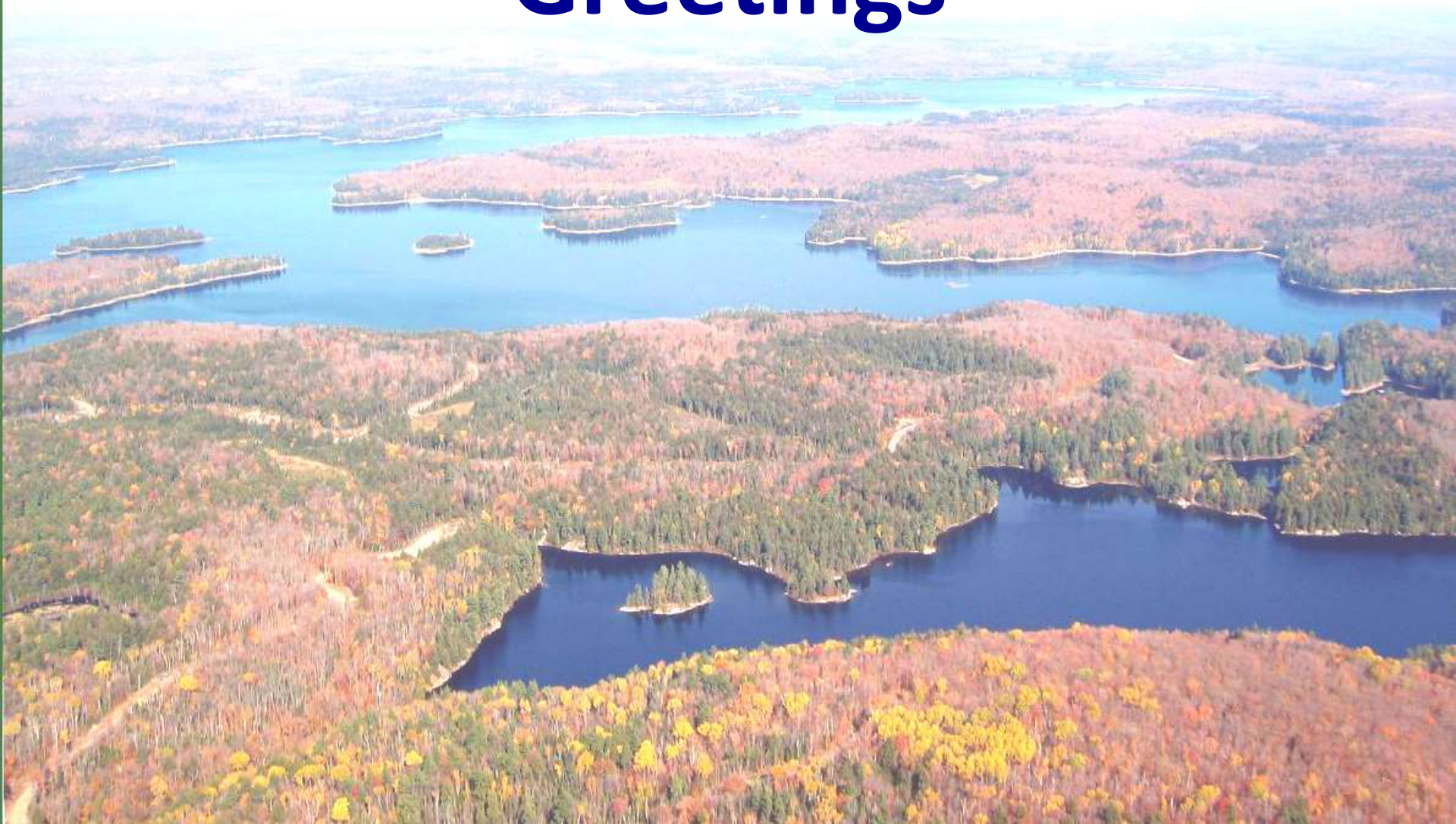
Meeting Agenda



Coalition for
Equitable
Water Flow

- **9:00 Registration**
- **9:30 Welcome & Introductions (Ted Spence CEWF Chair)**
 - Greetings from Murray Fearrey, Warden, Haliburton County
- **9:40 CEWF Annual Meeting (Chaired by Bruce McClennan, CEWF Vice-Chair)**
 - **Membership & Financial Update (Roger Cunningham, CEWF Sec/Treasurer)**
 - **CEWF Executive Committee 2015 Report to Members (Ted Spence, CEWF Chair, and Bruce McClennan, CEWF Vice Chair)**
 - **Preferred Water Levels Update (Chris Riddle)**
 - **CEWF Plans for 2015/2016 (Ted Spence, Chair)**
 - **Questions on CEWF reports (moderated by Bruce McClennan)**
- **10:30 Break**
- **10:40 Trent-Severn Waterway Operations and Capital Program**
 - Dave Ness and Jewel Cunningham
- **11:15 Questions for TSW (moderated by Ted Spence)**
- **11:45 Summary & Closing Remarks (Bruce McClennan)**

Welcome, Introductions & Greetings



CEWF Executive Committee



Coalition for
Equitable
Water Flow

- **Ted Spence, Chair** **Catchacoma Lake**
- **Bruce McClennan, Vice Chair** **Gull Lake**
- **Roger Cunningham, Sec/Treasurer** **White Lake**
- **Chris Riddle, Past Co-Chair** **Kennisis Lake**
- **Martin Rist, Past Co-Chair** **Drag Lake**
- **Bill Cornfield** **Horseshoe Lake**
- **David Lean** **Jack's Lake**
- **Geoff Byford** **Mountain Lake**
- **Jim Wilson** **Twelve Mile Lake**

Membership & Financial Update

Roger Cunningham



Member Lake Associations

Represents 90% of Reservoir Capacity: 6% no known LA



Coalition for
Equitable
Water Flow

- Anstruther
- Big Bob (South)
- Canning
- Cavendish Ratepayers (Mississagua, Catchacoma et al)
- Crystal
- Drag & Spruce
- Eel's
- Esson – Rowbotham Rd
- Fortescue
- Glamor
- Gull
- Haliburton
- Halls & Hawk (Big and Little)
- Horseshoe
- Jack's
- Kashagawigamog
- Kennisis
- Koshlong
- Kushog
- Little Glamor
- Loon
- Maple/Beech/Cameron
- Miskwabi
- Moore
- Mountain
- Percy
- Redstone
- Salerno/Devil's
- Soyers
- Twelve Mile/Little Boshkung
- White

Financial Report



- **CEWF 2015 Membership Contributions**

- No change in the level of fees since 2012
- To date – fees received, and in the mail from 29 Lake associations
- Reserve objective: \$10k - \$12k - for special communication campaigns, legal contingencies, technical advice and support, and administration

- **CEWF 2015 Expenses**

- conference calls, special meetings, administration expenses including website and insurance
- planned expenses for newspaper inserts with respect to the Federal Election

Financial Report



- **2015 Financial Results Nov 1/14 to Aug 31/15**

– Opening bank balance	\$ 12,383
– Lake donations deposited	\$ 2,075
– Conference calls	\$ 461
– Meetings (TSW, Govt. MPs)	\$ 275
– Other (web etc.)	\$ 142
– Closing bank balance 8/31/15	\$ 13,580

(Estimated Bank Balance Oct 31st \$12,000)



CEWF Executive Committee 2015 Report to Members

**Ted Spence
Bruce McClennan**

CEWF Executive Committee Report to Members Sept. 2015



Coalition for
Equitable
Water Flow

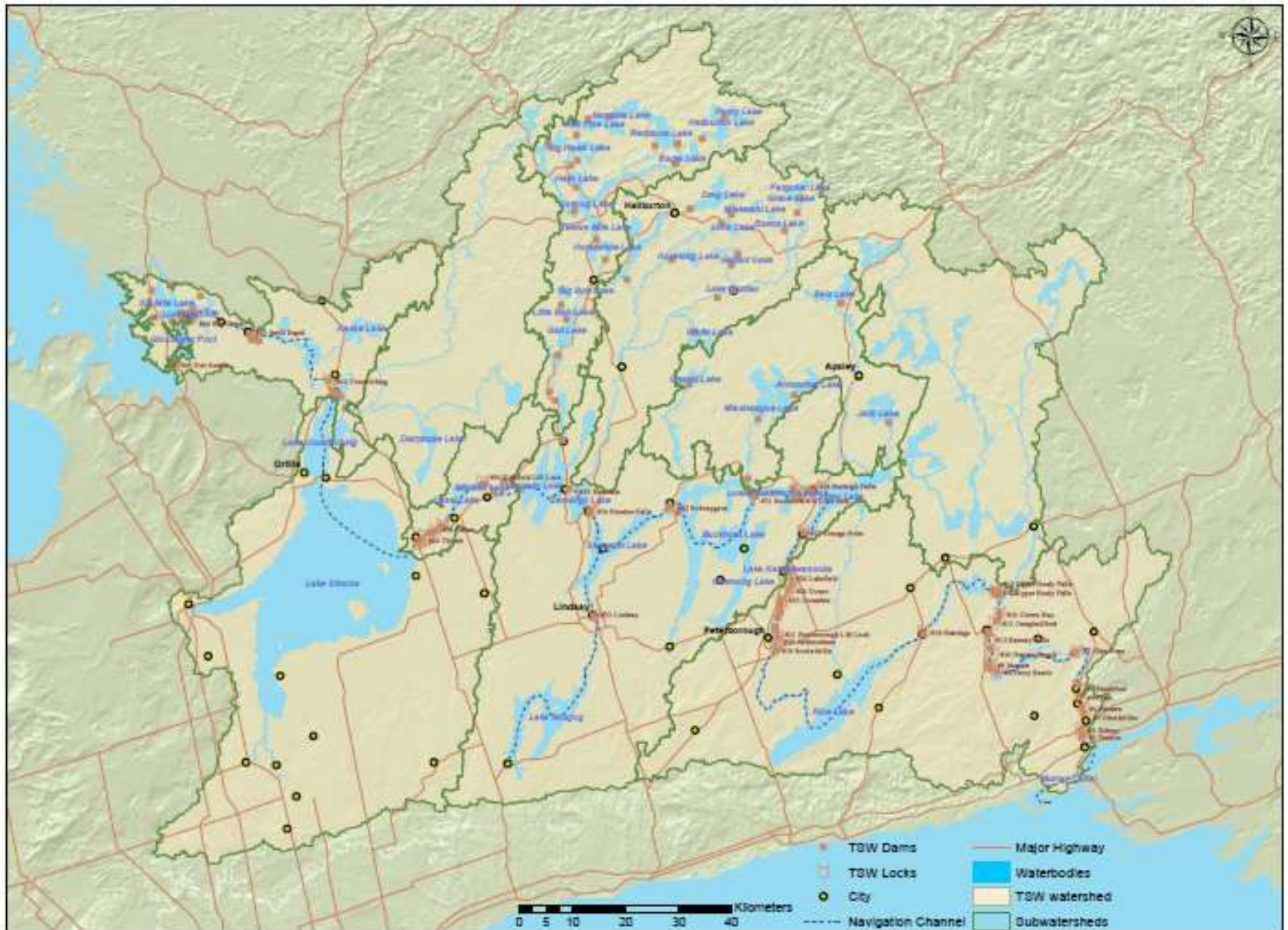
- Review CEWF Objectives
- 2014/2015 water levels overview
- Executive Committee meetings and association presentations
- Municipal Council presentations -*Towards a single voice for the reservoirs and flow through lakes of the Haliburton Sector of TSW*
- CEWF review of the loon nesting issue and ongoing review of the trout spawning issue (Bruce McClennan)
- Update on the Preferred Water levels Initiative (Chris Riddle)
- Q and A on the CEWF Executive Committee Report

CEWF Objectives



- To promote an **Integrated Approach to Water Management at the Watershed Level**
 - that will improve water conservation while recognizing the environmental, public safety, social and socioeconomic constraints of managing the water resource.
- To maintain **dialogue with TSW management**
 - to ensure improved understanding of local issues and management of water levels and flows in the RaFT lakes (includes Preferred Water Levels project).
- To promote **shared information and understanding of Water Management issues/practices**
 - watershed wide across the Canal lakes, and the RaFT lakes.
- To promote **approaches to ensure safe navigation, access to waterfront property, economic sustainability and the avoidance of negative environmental and economic impacts for residents on the RaFT lakes.**

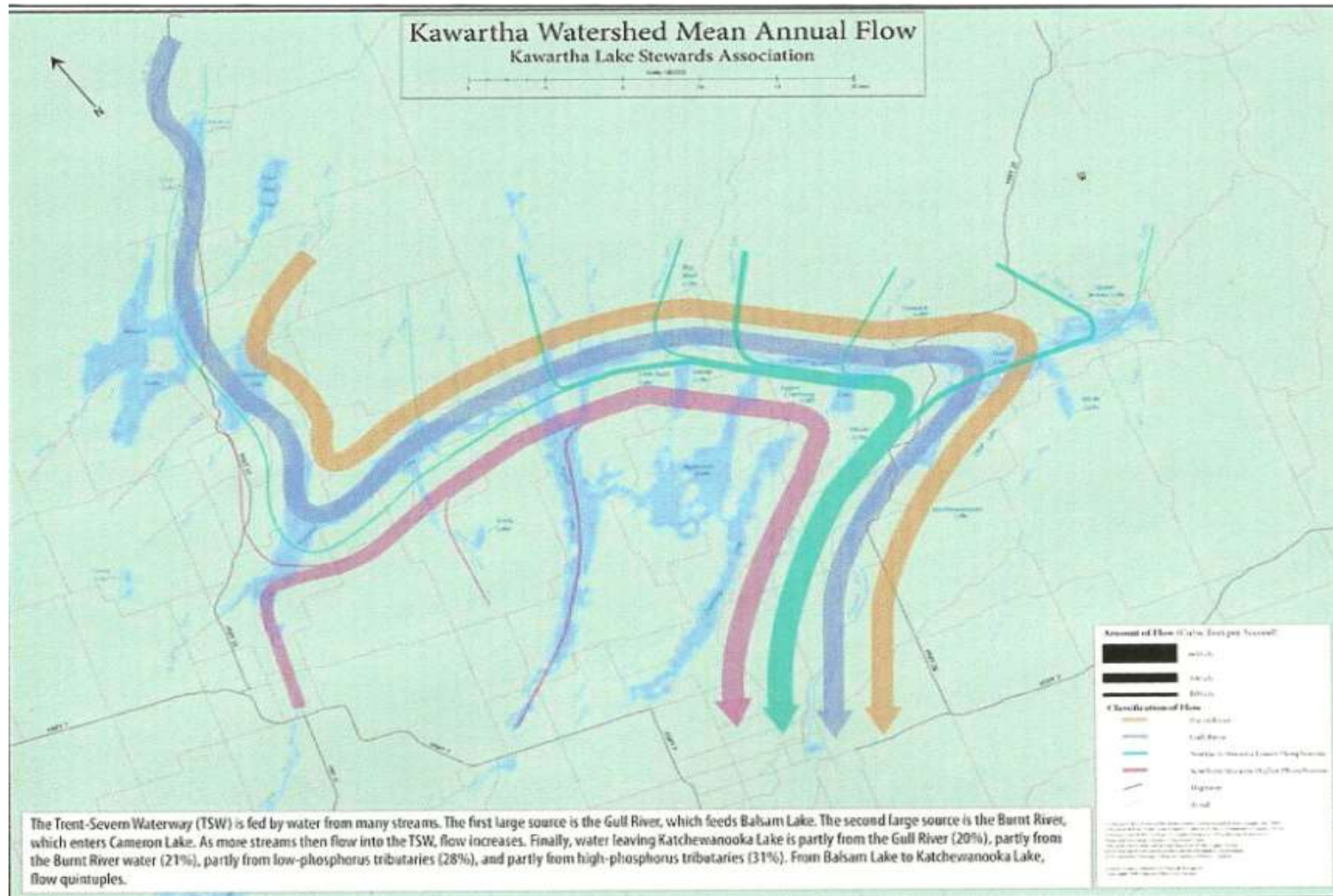
Trent-Severn Waterway National Historic Site of Canada



Kawartha Lakes Annual Flow

(20% Gull R, 21% Burnt R, 28% Central Reservoirs, and 31% from the South)

Source KLSA 2009



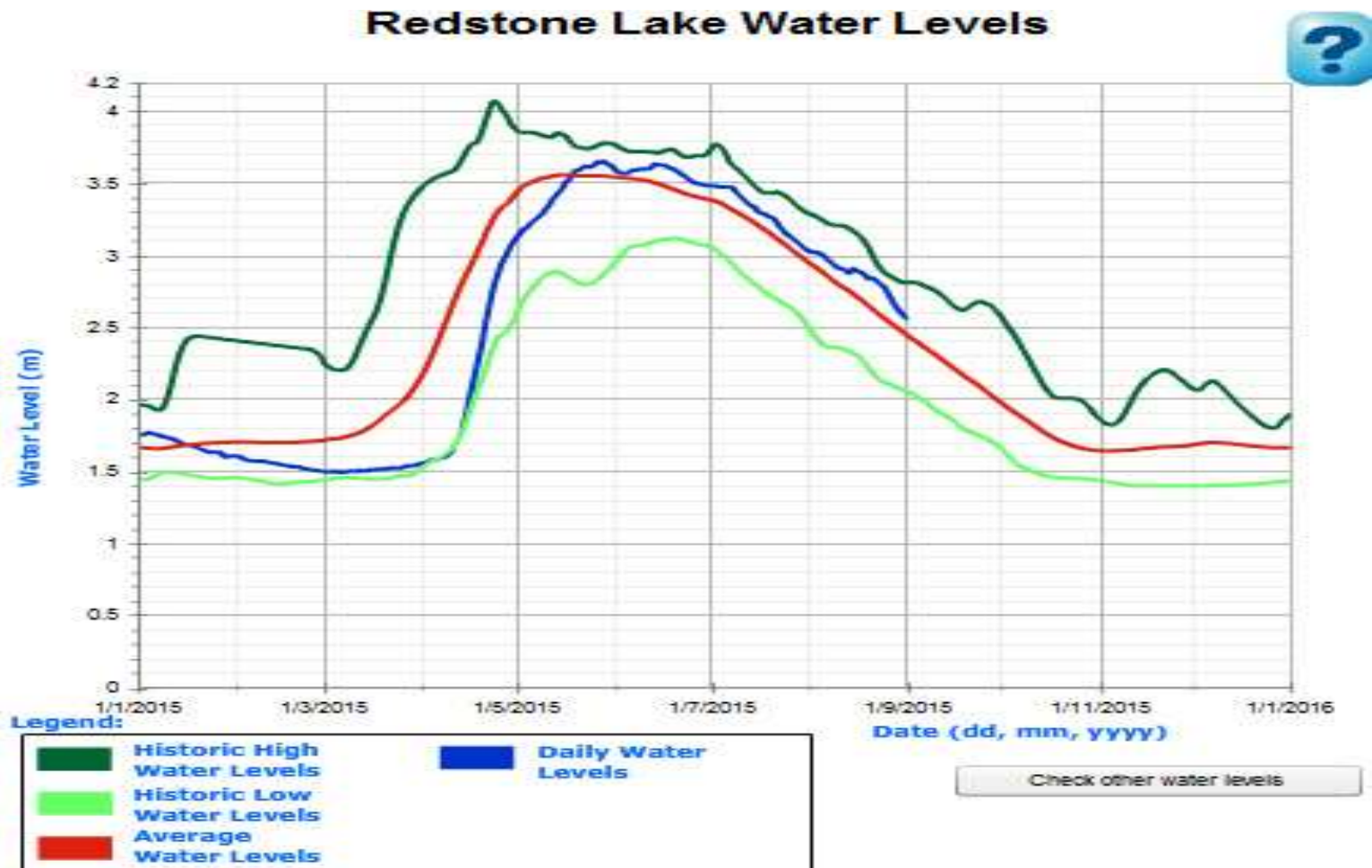
2014/2015 Water Levels Overview



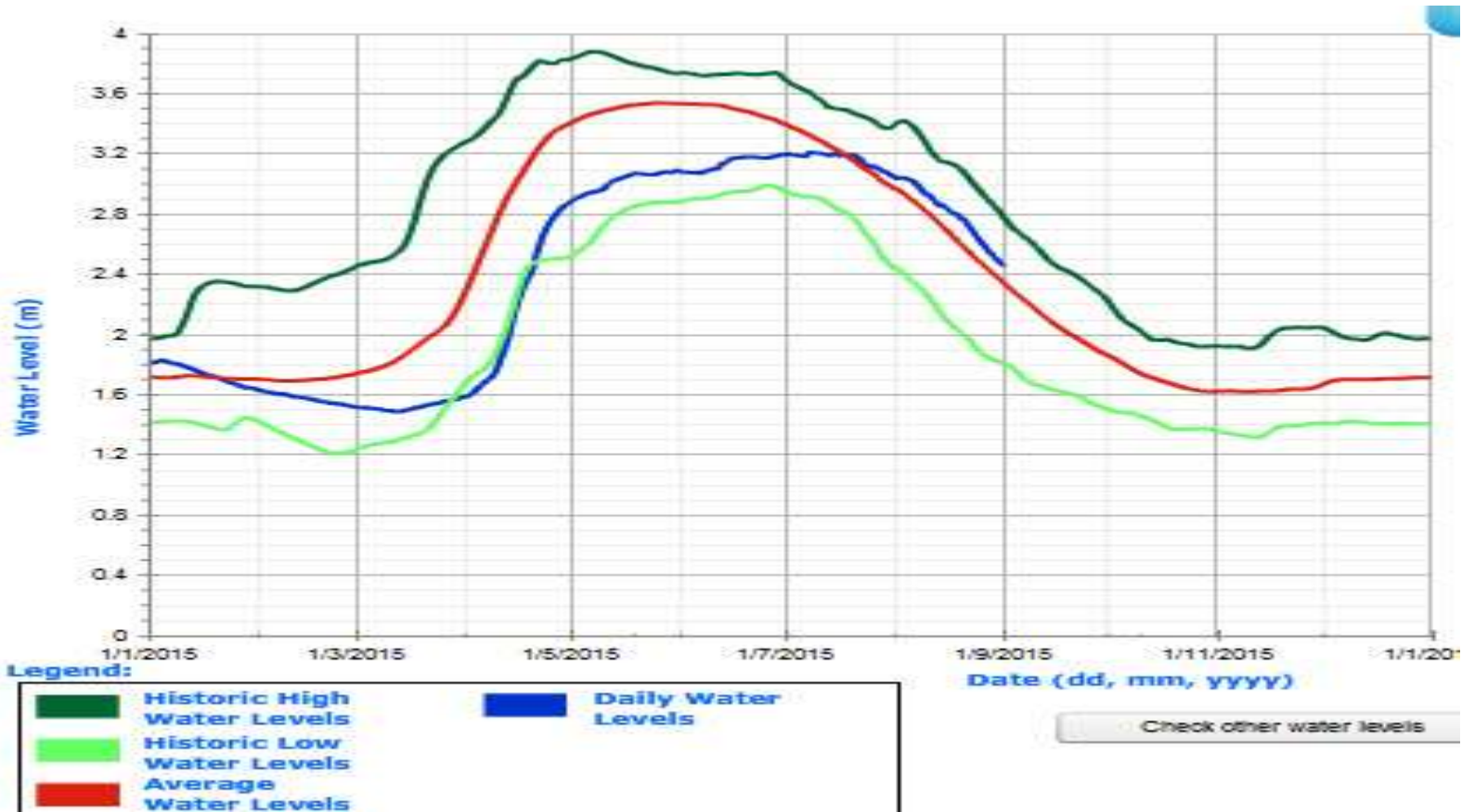
Coalition for
Equitable
Water Flow

- Although logs were at winter set by mid-September 2014 some lakes did not reach minimum levels in mid-Oct due to high rainfall amounts resulting in trout spawning implications.
- A very cold and dry winter resulted in very low levels in Feb/March on many reservoirs with high risk to trout spawn.
- Although logs were in place before the spring melt, late ice out and the low water equivalent in the snowpack resulted in low spring levels on many lakes.
- The reservoirs in the Gull and Burnt basins filled later than usual but were full in most cases by early June.
- The Southern reservoirs had less spring rainfall and in the cases of Eels Lake and Crystal Lake never did reach their full levels.
- Summer 2015 levels have been at or above average for most reservoirs.

A Typical Gull or Burnt River Reservoir 2015



Eels Lake a Typical Southern Reservoir 2015- Did not Fill



Executive Committee Meetings, Events and Presentations



- The CEWF Executive Committee held monthly meetings in person from May to October and by conference call November to April,
- Regular communications with TSW water management staff resulted in water management reports issued via CEWF website in late winter and spring.
- Face to face meetings with TSW management were held three times in 2014-2015.
- A separate technical review meeting with a CEWF sub-Committee and the TSW water management engineer and technical staff was held.
- CEWF was invited to and attended the major Capital funding announcement for TSW in June.
- Executive members gave invited presentations to lake associations particularly in the southern reservoirs in 2015.

2015 – CEWF and TSW Management



- **CEWF continued to work with TSW management** with a focus on:
 - **Greater understanding of RaFT lake issues** including preferred water levels, fisheries and other environmental constraints, winter set levels, and flood management issues and constraints.
 - Encouraging TSW to act on the recent AECOM Study recommendations with specific reference to the **acquisition of improved forecasting models**.
 - Encouraging TSW to work with municipalities and Ontario to provide a **greater information base for effective water management in flood situations** with the objective of improving public safety and minimizing damage costs.
 - Encouraging TSW to reactivate the **TSW Water Management Advisory Council**.
 - Urging the public release of the results of the numerous **dam safety reviews** that have now been undertaken across the TSW system.
 - Ensuring opportunities for **public and municipal input on TSW capital project planning** e.g. dam refurbishment and micro-hydro opportunities.

CEWF, Municipalities and Ontario Engagement & Support



Coalition for
Equitable
Water Flow

- Executive members met individually with new councillors and/or reeves and mayors
- CEWF is meeting with each of the new Councils in Haliburton and northern Peterborough County Municipalities (July – Oct 2015)
 - To expand understanding of the complexity of watershed wide water management issues **and seek support for more integrated planning.**
 - To initiate a conversation on the value of establishing a single entity from the RaFT Lakes to speak on watershed-wide water management related issues for the entire RaFT lakes area, including all reservoirs in Haliburton and northern Peterborough counties not currently represented by a Conservation Authority.

Why is an Integrated Approach Important?



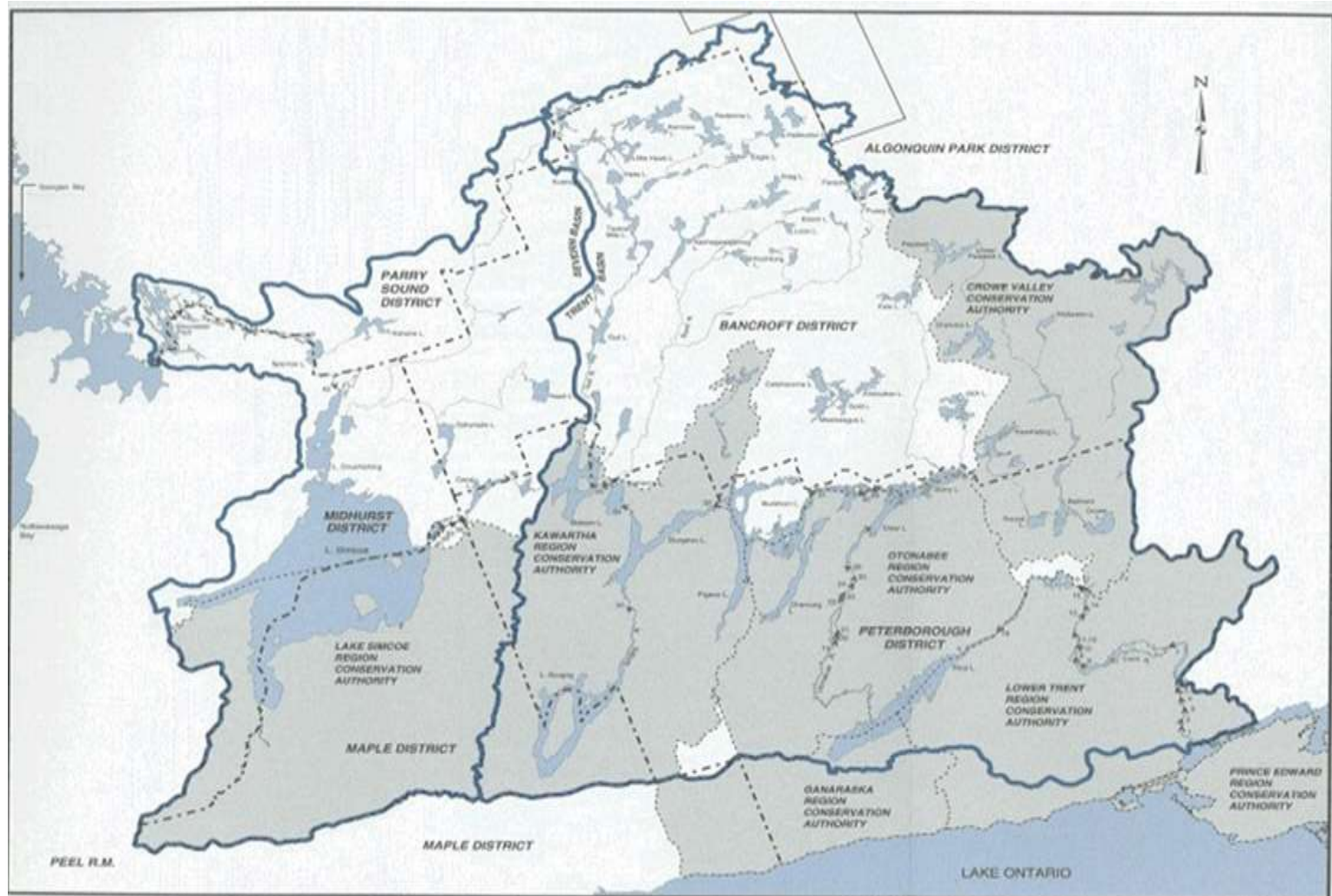
- It establishes the entire (Trent) watershed as the geographic area to be managed. It would facilitate development of a **watershed plan** that is able to address regional social and economic considerations as well as water management.
- It allows the priorities of canal users to be **balanced** against those of municipalities and other stakeholders given the multiple uses of the water – for municipal drinking water, sewage treatment effluent dilution, irrigation, recreation, tourism, wildlife protection and preservation of wetlands etc. in all parts of the watershed.

What About Water Quality?



- The Trent watershed is a living ecosystem from the headwaters to Lake Ontario
- It includes the forests, wetlands, lakes and rivers as well as the urban landscapes – all of which influence both hydrology (flow patterns) and water availability
- The equitable sharing of water includes making sure that there is adequate supply for these natural ecosystems
- Health and ecological integrity are prime concerns
- The CEWF overall approach recognizes the importance of water quality, but we typically defer to the Lake and Ratepayer associations, and umbrella groups like the Kawartha Lakes Stewards (KLSA) and the Coalition of Haliburton Associations (CHA) to take the lead on water quality issues.

Six Conservation Authorities in the Trent Severn Watersheds but **No CA Coverage for Most of the Reservoir Lakes Areas**



We lack a regional voice



- CEWF is concerned that the RaFT lakes region (Haliburton and northern Peterborough Counties) lacks a ‘single voice’ to advocate for our interests in watershed-wide initiatives that affect our social and economic interests, and water management.
- CEWF is not proposing a conservation authority but suggests there might be benefits from a ‘watershed council’ or some similar mechanism led by the municipal/county levels of government.

We need to engage Ontario



- CEWF believes that the Province needs to be more involved, especially as their focus is already on watersheds.
- There may be an opportunity for a pilot project under the MNRF Partnership program to undertake one or more initiatives that our area lacks for want of a CA:
 - Dry season planning – impact on wetlands, water supply, navigation, tourism, flood horizons for ‘at-risk’ lakes such as Horseshoe
 - Improved fishery information (trout and walleye) that is lake or river-specific
 - Other constraint information necessary for a fully functional, constraint-based water-management plan.

Two Promising but now Disappointing Initiatives - WMAC (2009) & MOU (2011)



- Parks Canada established a Water Management Advisory Council in 2009
 - Members from Reservoirs were Chris Riddle (CEWF) & Keith Hodgson
 - WMAC provided a valuable forum for stakeholder engagement
 - **However the Council currently lacks a Chair and is dormant**
- Ontario and Canada signed an MOU in 2011. Priorities included:
 - clarification of jurisdictional responsibilities,
 - waterway and watershed-wide collaborative planning
 - There has been a lack of communications regarding activity under the MOU which **is due to expire in July 2016**

What can Municipalities Do?



Coalition for
Equitable
Water Flow

1. Recognize that the lakes and their water quality and levels are our lifeblood therefore continue steps like Shoreline Protection
- 2. Strongly endorse the need for a revitalized TSW Water Management Advisory Council (WMAC).**
- 3. Work to ensure that RaFT lake municipalities have a strong single voice in federal & provincial water management discussions affecting the Trent watershed.**
4. Review Flood planning and update floodplain data
5. Review Low Water implications and plans with TSW and seek a more equitable approach based on conservation
6. Urge Parks Canada to release dam safety information

Status of Municipal Presentations



- **Dysart et. al. - July 27th – (working on a resolution)**
- **Minden Hills - Aug 27th – (resolution expected)**
- **Algonquin Highlands – Sept. 3rd (resolution passed)**
- **North Kawartha - Sept. 15th**
- **Trent Lakes – Sept. 15th**
- **Highlands East – Sept. 30th**
- **Haliburton County - Oct 28th - tentative**

CEWF and the Federal Election



- In 2015, the RaFT Lakes area will for the first time be represented by two separate federal ridings:
 - Haliburton-Kawartha Lakes-Brock, and
 - Peterborough-Kawartha.
- CEWF Executive Committee has been in contact with all candidates.
- CEWF will actively engage the new MPs in each of our ridings after the election.

What are others saying?



Mark Ackert's TSW Working Group is asking candidates in the upcoming federal election to endorse 4 points:

1. Support full funding for critical TSW infrastructure
 2. Recognize the TSW's economic significance
 3. Promote the TSW in Parliament as an economic development priority
 4. Support a new governance model that devolves operations, control and financing of the Trent Severn Waterway to those who live and work in the region
- *CEWF cautions that this focus on canal operations makes no mention of water management for the watershed or the economy of the RaFT lakes region.*
 - *CEWF does not support the governance devolution proposal as we are committed to integrated basin wide water management led by Parks Canada.*

CEWF and Environmental Issues



- CEWF is committed to environmental protection throughout the RaFT Lakes area, and we continue to discuss concerns with TSW Management.
- In 2015, the CEWF Executive Committee reviewed issues related to the flooding of loon nests when reservoir levels rise after early June, as was the case in the southern reservoirs in 2015.
- On an ongoing basis, the CEWF Executive is reviewing the issues related to fall and winter water levels and the impacts on lake trout spawning recognizing the problems experienced on some lakes last fall and winter.

Loons and Water Management

Background



Coalition for
Equitable
Water Flow

- Build nests 3rd or 4th week of May, 1 to 2 meters from shore and within 0.2 m of water level.
- Eggs laid in early June with 26 to 29 days of incubation.
- Water levels rising significantly above those levels achieved in 4th week of May will flood nests and cause nest failure
- Water levels dropping significantly below 4th week of May will cause nest access problems.

Loons and Water Management

CEWF Suggestions to TSW



Coalition for
Equitable
Water Flow

- TSW to target maximum reservoir levels by about May 20
- In the event of a major drought affecting many reservoirs which leaves reservoirs substantially below full, fill the reservoirs in June if possible to avoid major problems later in the season. Particularly true of the larger reservoirs.
- In the event of a more localized drought which affects levels on only a few reservoirs, Lake Associations can petition TSW themselves regarding their preferred water management action
- Lake Associations should be proactive in protecting their loons – e.g. floating nesting platforms, education regarding boat wakes, etc.

An aerial photograph of a large, multi-lobed lake system, likely a reservoir or a series of interconnected lakes. The water is a deep blue color. The surrounding land is covered in dense forest, with many trees showing vibrant autumn colors in shades of orange, red, and yellow. The terrain appears to be hilly or mountainous. The sky is clear and bright. The text "Preferred Water Levels" is overlaid in the center of the image in a large, bold, blue font.

Preferred Water Levels

Chris Riddle

Preferred Water Levels



- At the 2014 Annual Meeting we reported that eleven Reservoir Lakes had completed PWLs which CEWF had filed with the TSW: The 11 lakes are:
 - » **Anstruther**
 - » **Crystal**
 - » **Drag**
 - » **Gull**
 - » **Haliburton**
 - » **Horseshoe & Mountain**
 - » **Jack's**
 - » **Kennisis**
 - » **Miskwabi**
 - » **Percy**
 - » **Redstone**

Preferred Water Levels



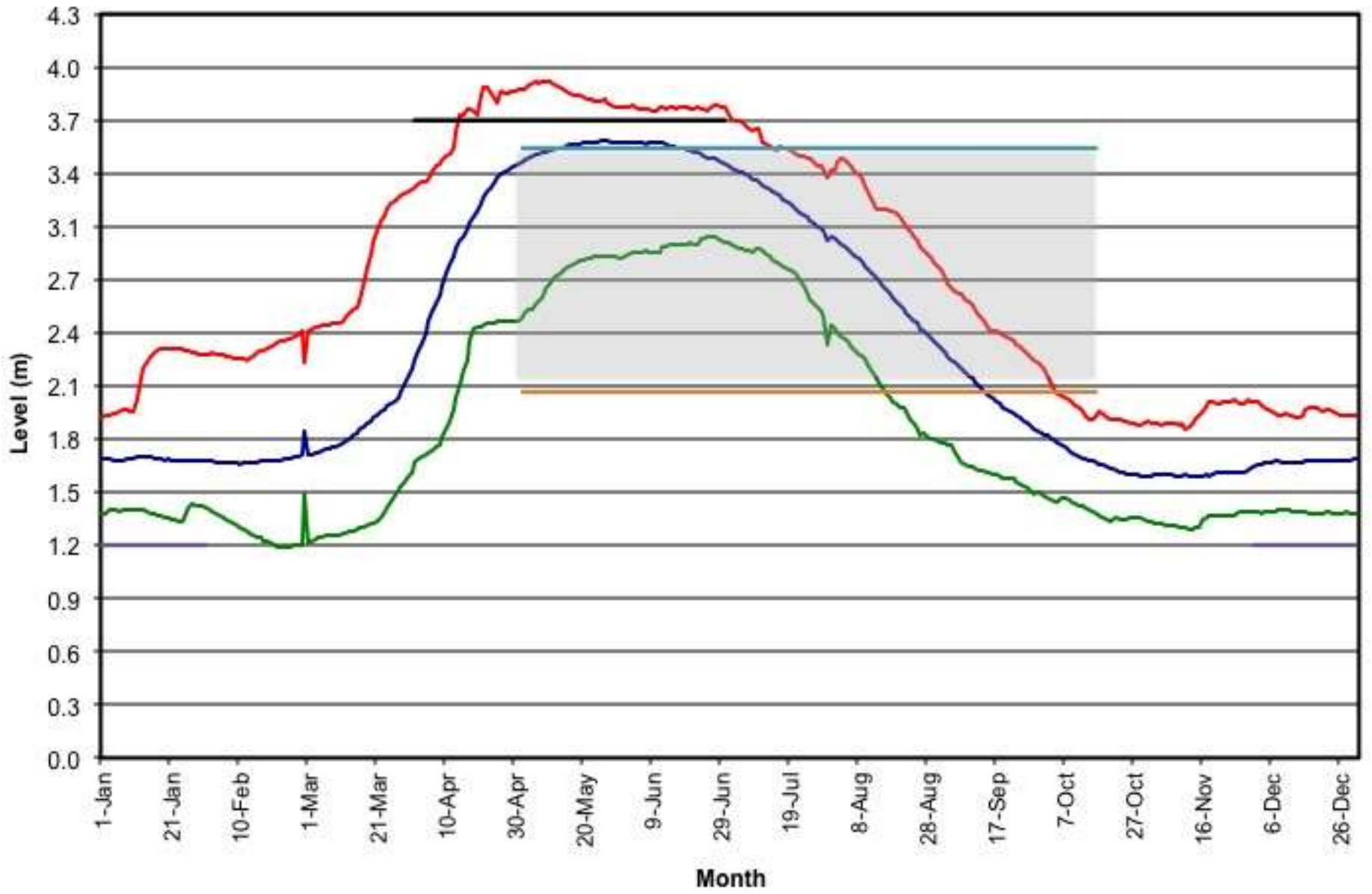
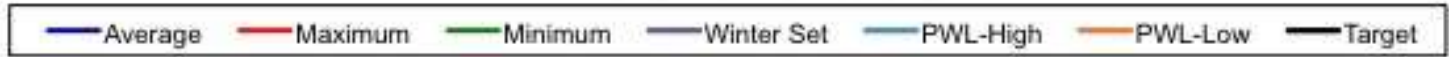
- Since then the following lakes have PWL initiatives completed or in process:
 - » **Eel's** (complete)
 - » **Mississagua** (complete)
 - » **White & Fortescue** (complete – under review)
 - » **Kushog** (complete – under review)

Preferred Water Levels

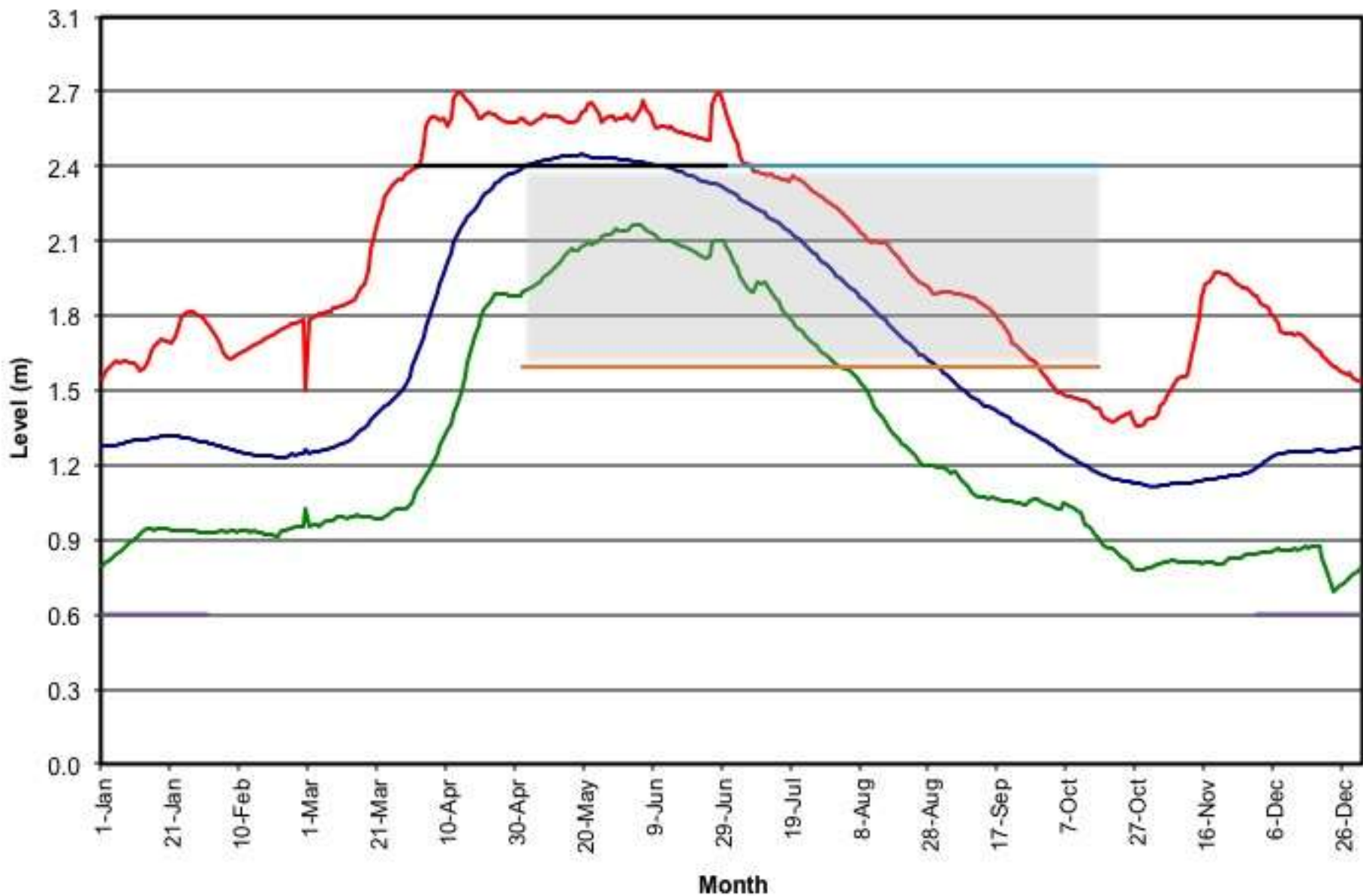
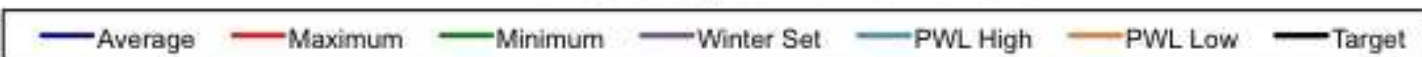


- **To date PWL submissions have highlighted:**
 - Unique constraints relating to navigation etc. (bridges, narrow channels etc.)
 - Concern over multiple log-pulls and high flow rates downstream of dams
 - Spring multi-year average is generally acceptable as PWL – High
 - Any higher can result in ice-damage, flooding and erosion
 - For several lakes one additional log left in at winter-set would greatly ease fall navigation
 - Several lakes experience a significant ‘dip’ in the fall which the TSW may be able to reduce, especially in a wet year with a minor modification to equal percentage drawdown
 - Any alternative to the current E%DD will require modeling
 - Operations in a dry years remain a major challenge
 - Unique lake characteristics are an important factor in a constraint-based model

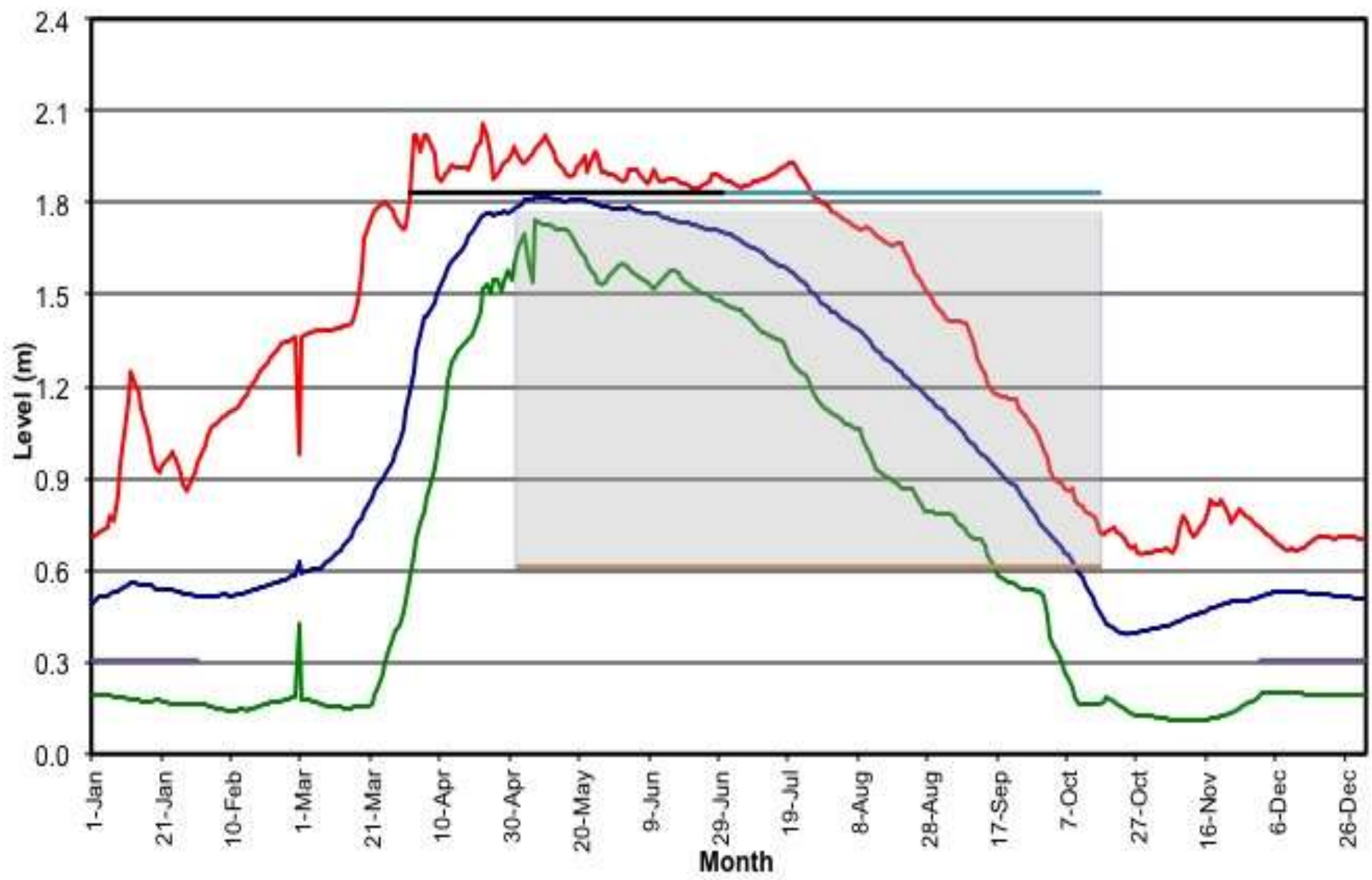
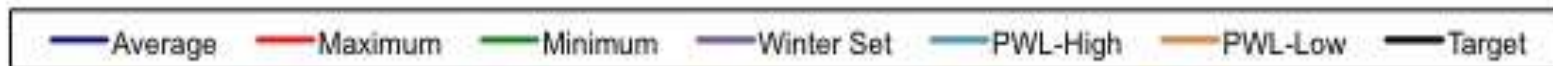
Eels Lake Levels



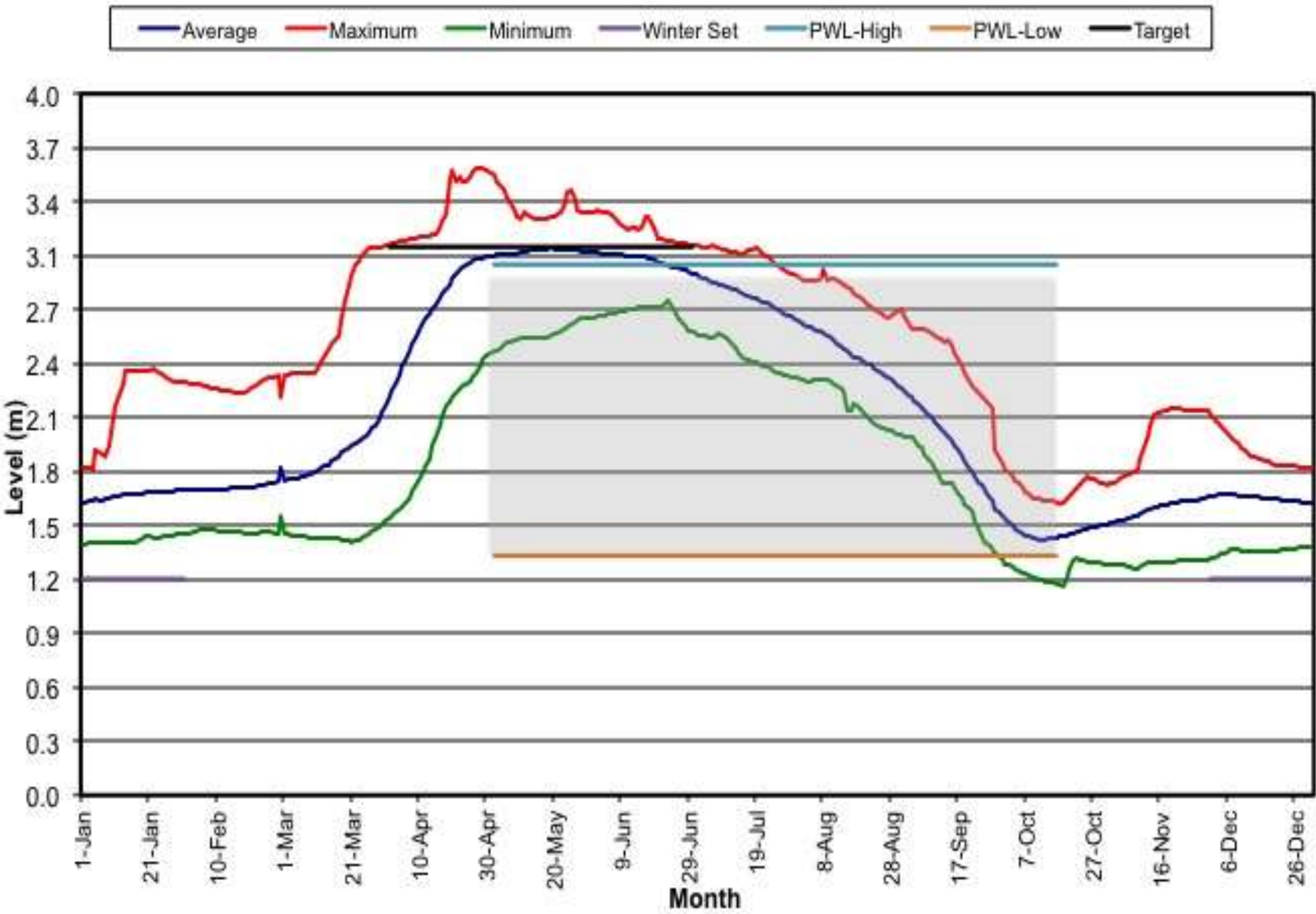
Mississauga Lake Levels



White Lake Levels



Kushog Lake Levels



Preferred Water Levels



- Have I missed any lakes that are working on PWLs?

CEWF Plans for 2015 /2016



CEWF Executive Committee Plans for 2015 /2016



Coalition for
Equitable
Water Flow

- Complete Municipal presentations and press ahead with the “single voice for the RaFT Lakes” initiative,
- Engage federal election candidates and follow up with new MPs,
- Continue working with TSW management towards improved water management in the RaFT lakes and integrated water management basin wide.
- Monitor the TSW Capital program and keep membership informed of developments,
- Work with member associations on specific issues and participate in Association AGMs when invited,
- Review CEWF Governance issues to regularize procedures and reporting to the membership.



Questions on CEWF Reports

Please focus questions on CEWF Reports as there will be a separate opportunity for questions related to Water Management Operations after the TSW presentation.

Moderated by Bruce McClellan

TSW Update

Dave Ness

**Water Management Engineer
Ontario Waterways**

&

Jewel Cunningham

Director, Ontario Waterways Unit

Questions for TSW?

Moderated by Ted Spence

Closing Remarks

Bruce McClennan



Coalition for
Equitable
Water Flow

Key Challenges/Takeaways for the Coalition

Follow us throughout the year at www.cewf.ca

Major Infrastructure Funding

Announcement - June 19, 2015



Coalition for
Equitable
Water Flow

- **The Government of Canada has announced a five year \$285 million capital improvement program for the TSW infrastructure.**
- **Five Projects in the reservoirs (Haliburton Sector) are included**
 - Rehabilitation of the **Mississagua Lake Dam** (\$2.8M),
 - Rehabilitation of the **Coboconk Dam** (\$1.2M),
 - Rehabilitation of the **Horseshoe Lake Dam** (\$700k)
 - Replacement of the **Kennisis Lake Dam** (\$1.4M)supplementary funding to go with the \$3.5M previously announced (new total \$4.9M)
 - Funding for **concrete rehabilitation at various sites** (\$10.6M)
- **A major reconstruction of Dam #1 at Trenton (\$25.3M) plus mechanization of several canal dams** will provide significant improvements to water management capacity of the whole system.