

# Real-Time Hydrometric Data Graph for BLACK RIVER NEAR WASHAGO (02EC002) [ON]

## Station Notice

Water Survey of Canada's official data products are Water Level and Discharge. All other parameters are categorized as data outputs, and they are provided as-is. We have no standard operating procedures for data collection or processing for data outputs. This means that sensor selection, calibration, and placement are not standardized, nor is there any systematic quality assurance or quality checking of the resulting data.

All times are specified in Local Standard Time (LST). Add 1 hour to adjust for Daylight Saving Time where and when it is observed.

Graph

Table

Download?

Location on Map

Station: 02EC002

Data Type: Real-Time

Apply

### Legend

Water level (unit values) - Final

Water level (unit values) - Provisional

Water level (unit values) - Measurements

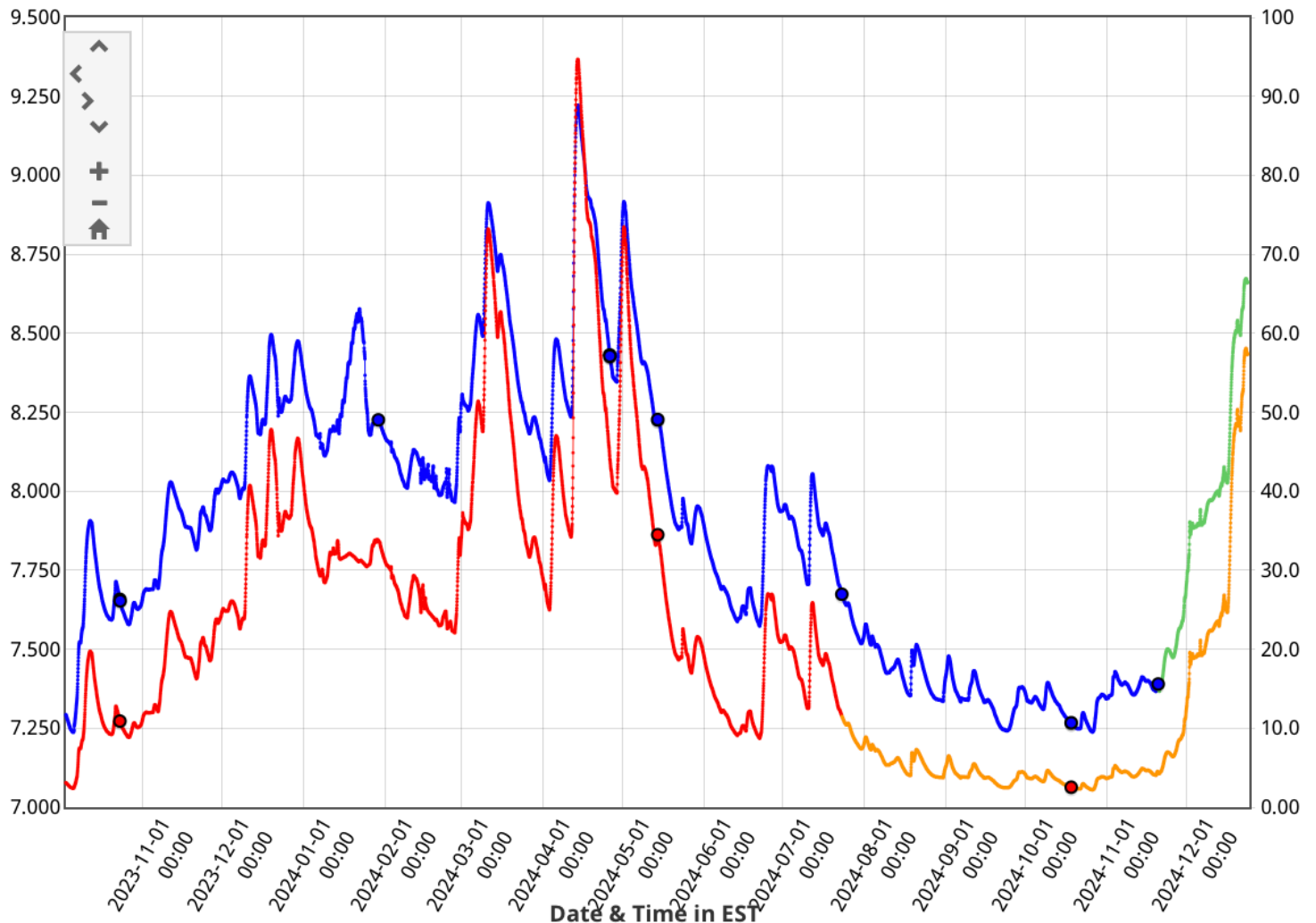
Discharge (unit values) - Final

Discharge (unit values) - Provisional

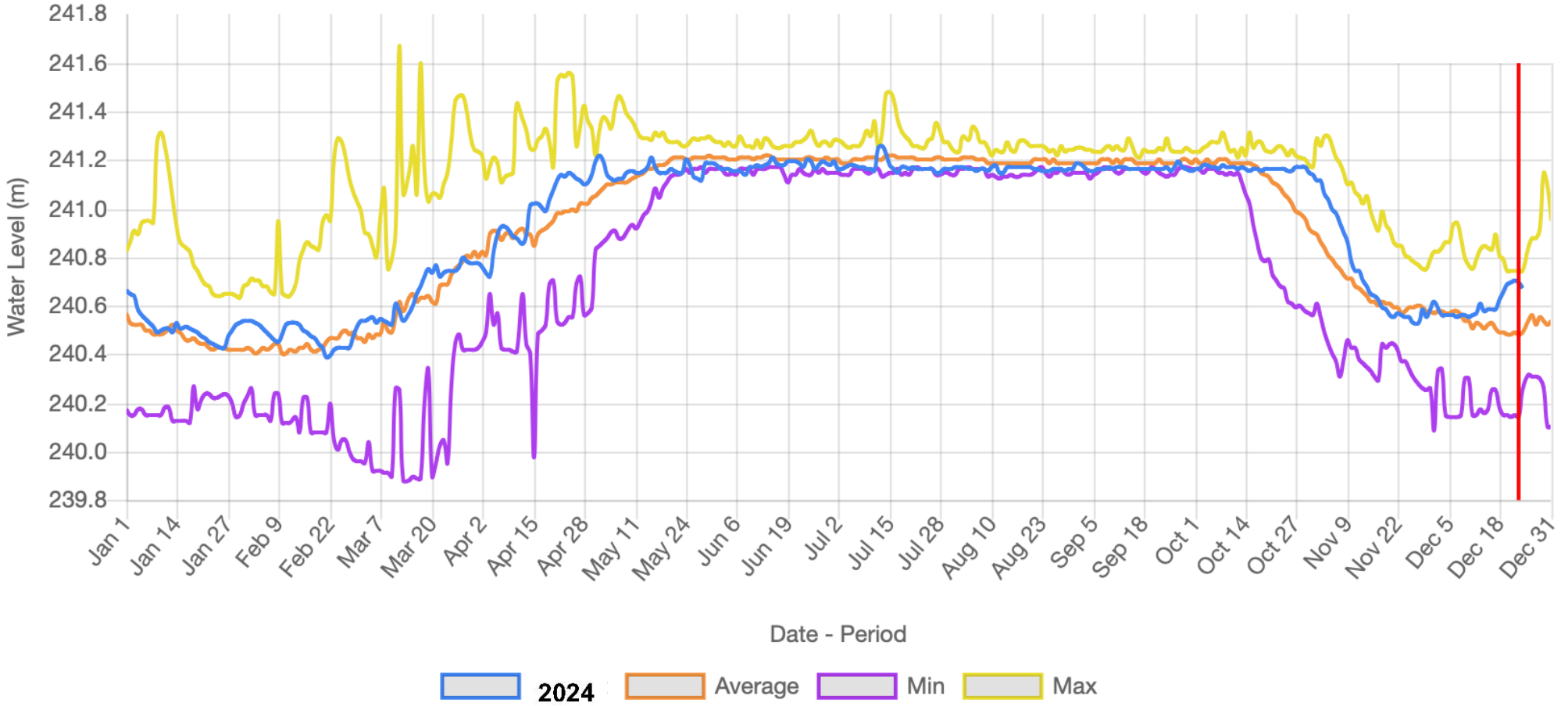
Discharge (unit values) - Measurements

Water level (unit values) (m)

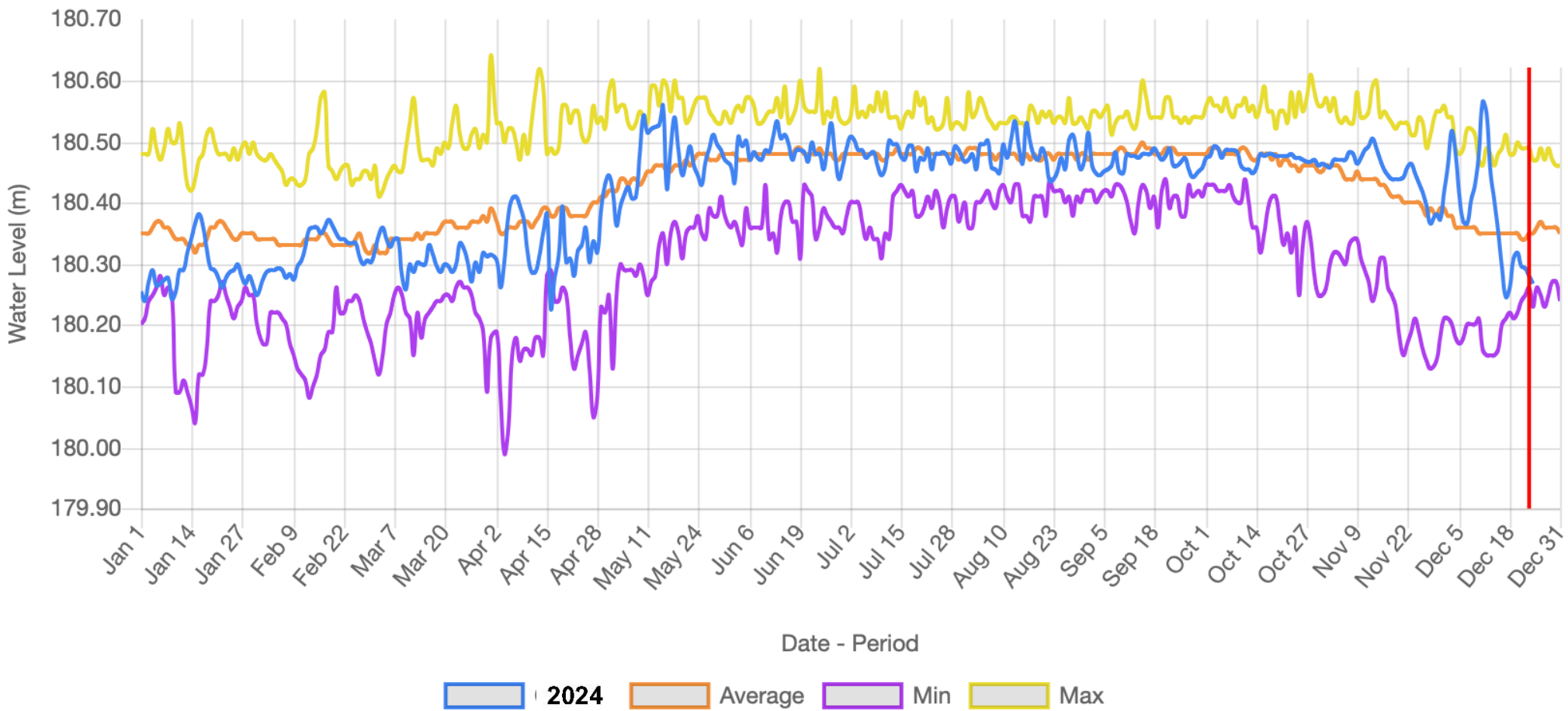
Discharge (unit values) (m<sup>3</sup>/s)



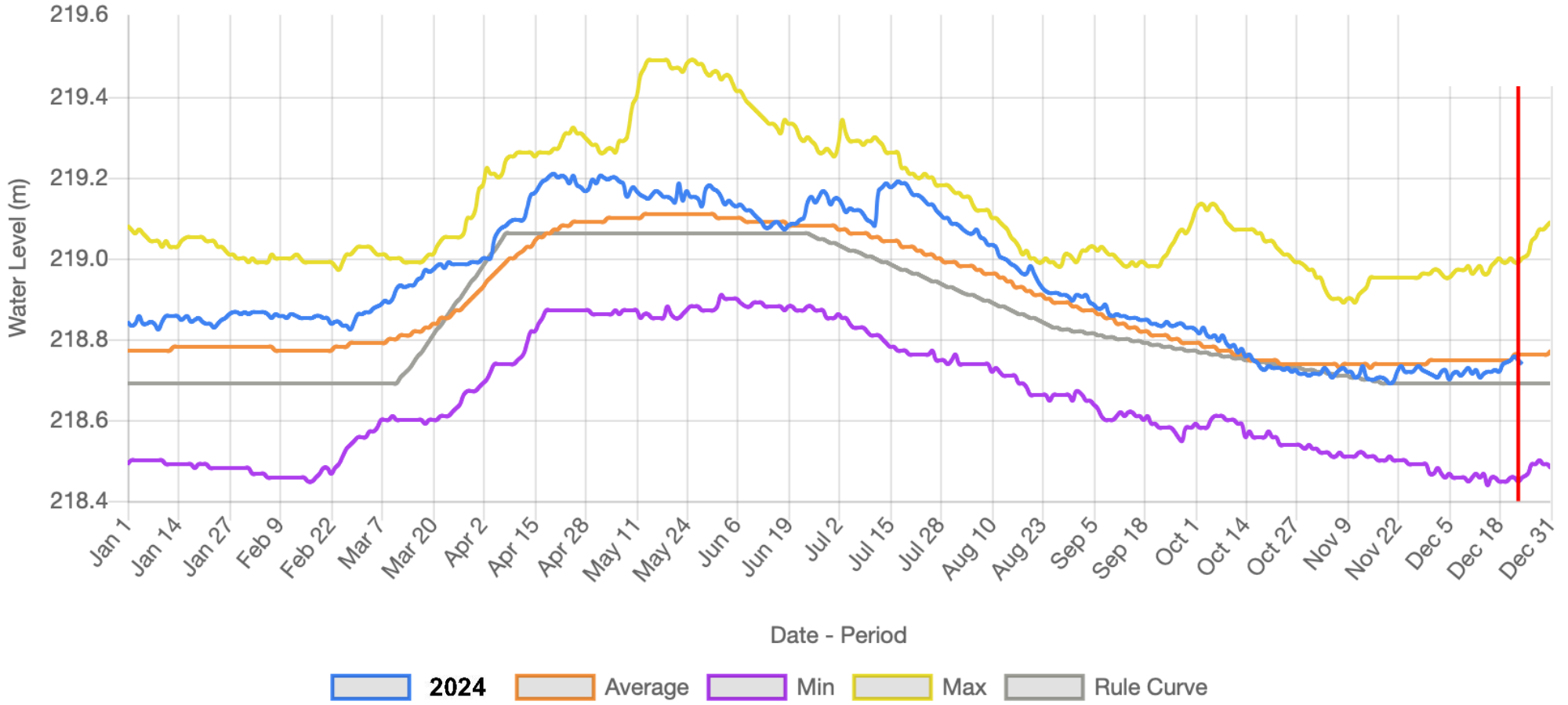
### Canal Lake - Level Gauge



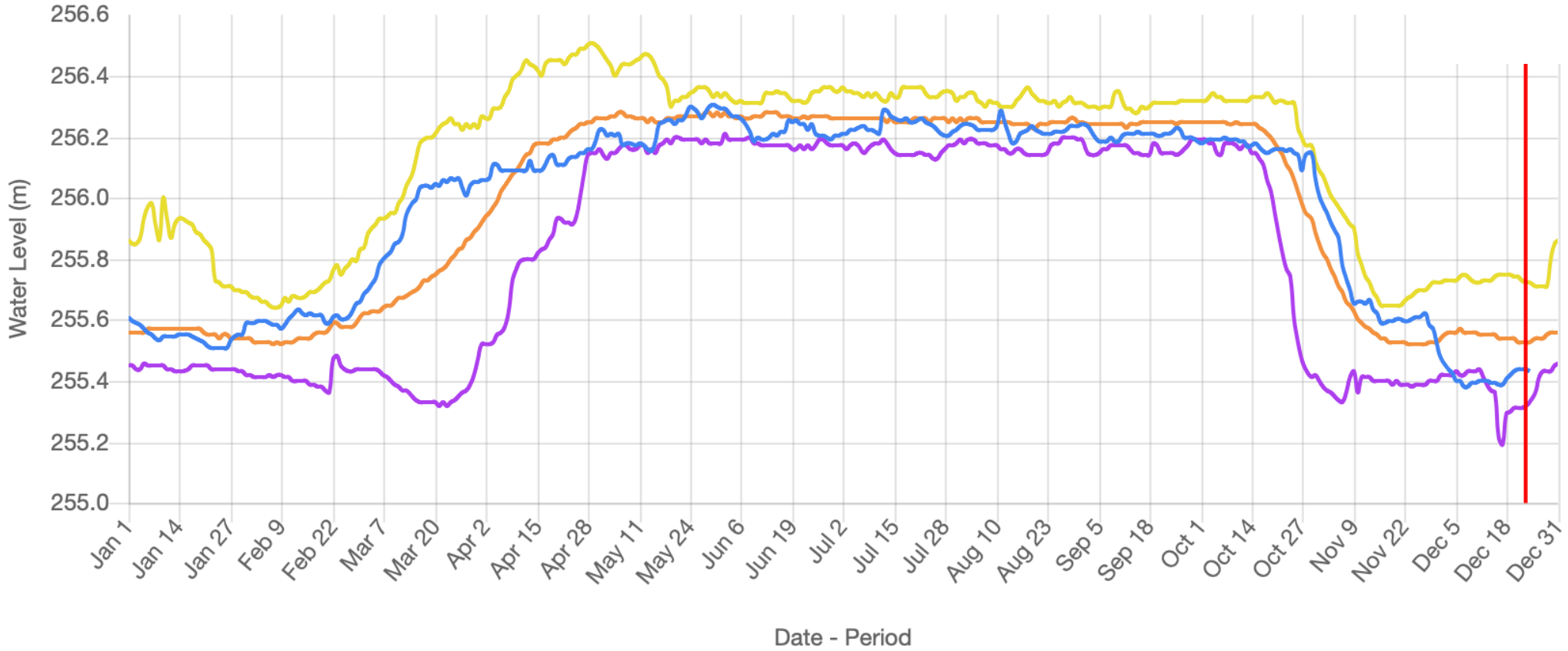
### Gloucester Pool - Level Gauge



Lake Simcoe - Level Gauge

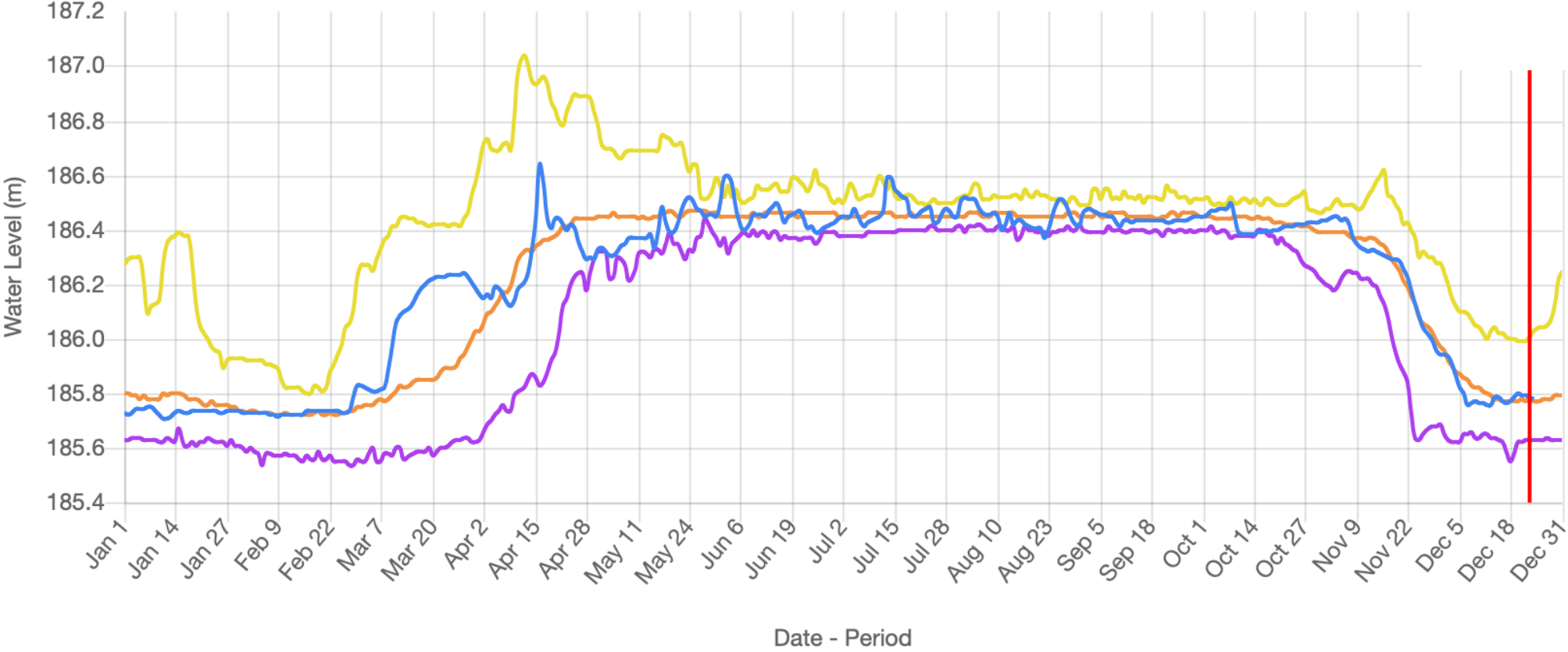


### Mitchell Lake - Level Gauge



2024 : Average Min Max

### Six Mile Lake - Level Gauge



2024 Average Min Max

### Sparrow Lake - Level Gauge

